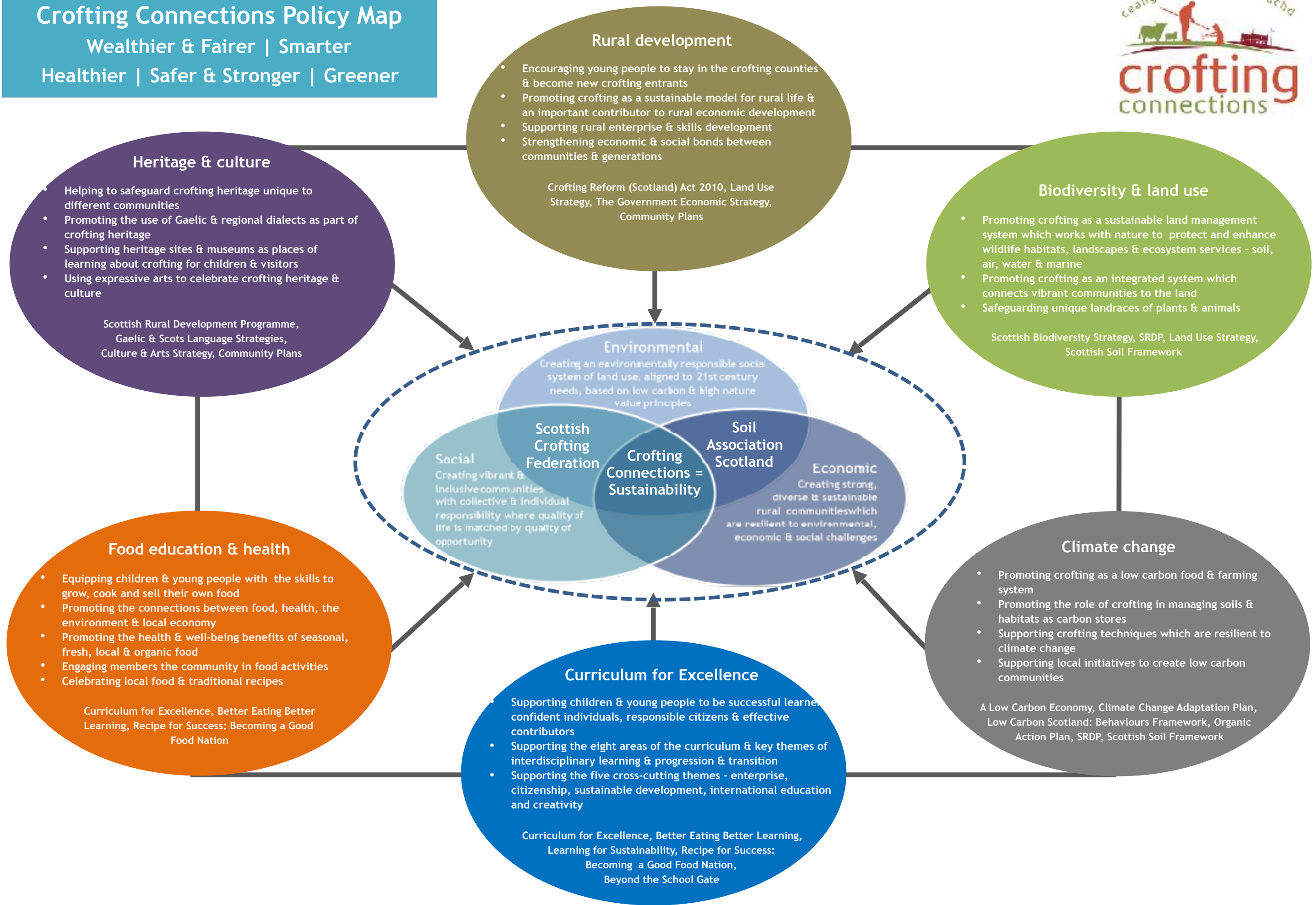




**Crofting Connections Policy Map**  
 Wealthier & Fairer | Smarter  
 Healthier | Safer & Stronger | Greener



**Rural development**

- Encouraging young people to stay in the crofting counties & become new crofting entrants
- Promoting crofting as a sustainable model for rural life & an important contributor to rural economic development
- Supporting rural enterprise & skills development
- Strengthening economic & social bonds between communities & generations

Crofting Reform (Scotland) Act 2010, Land Use Strategy, The Government Economic Strategy, Community Plans

**Biodiversity & land use**

- Promoting crofting as a sustainable land management system which works with nature to protect and enhance wildlife habitats, landscapes & ecosystem services - soil, air, water & marine
- Promoting crofting as an integrated system which connects vibrant communities to the land
- Safeguarding unique landraces of plants & animals

Scottish Biodiversity Strategy, SRDP, Land Use Strategy, Scottish Soil Framework

**Climate change**

- Promoting crofting as a low carbon food & farming system
- Promoting the role of crofting in managing soils & habitats as carbon stores
- Supporting crofting techniques which are resilient to climate change
- Supporting local initiatives to create low carbon communities

A Low Carbon Economy, Climate Change Adaptation Plan, Low Carbon Scotland: Behaviours Framework, Organic Action Plan, SRDP, Scottish Soil Framework

**Curriculum for Excellence**

- Supporting children & young people to be successful learners, confident individuals, responsible citizens & effective contributors
- Supporting the eight areas of the curriculum & key themes of interdisciplinary learning & progression & transition
- Supporting the five cross-cutting themes - enterprise, citizenship, sustainable development, international education and creativity

Curriculum for Excellence, Better Eating Better Learning, Learning for Sustainability, Recipe for Success: Becoming a Good Food Nation, Beyond the School Gate

**Food education & health**

- Equipping children & young people with the skills to grow, cook and sell their own food
- Promoting the connections between food, health, the environment & local economy
- Promoting the health & well-being benefits of seasonal, fresh, local & organic food
- Engaging members the community in food activities
- Celebrating local food & traditional recipes

Curriculum for Excellence, Better Eating Better Learning, Recipe for Success: Becoming a Good Food Nation

**Heritage & culture**

- Helping to safeguard crofting heritage unique to different communities
- Promoting the use of Gaelic & regional dialects as part of crofting heritage
- Supporting heritage sites & museums as places of learning about crofting for children & visitors
- Using expressive arts to celebrate crofting heritage & culture

Scottish Rural Development Programme, Gaelic & Scots Language Strategies, Culture & Arts Strategy, Community Plans

**Environmental**  
 Creating an environmentally responsible social system of land use, aligned to 21st century needs, based on low carbon & high nature value principles

**Social**  
 Creating vibrant & inclusive communities with collective & individual responsibility where quality of life is matched by quality of opportunity

**Economic**  
 Creating strong, diverse & sustainable rural communities which are resilient to environmental, economic & social challenges

**Scottish Crofting Federation**

**Soil Association Scotland**

**Crofting Connections = Sustainability**